



School of  
Social Policy,  
Social Work  
and Social  
Justice

# RESEARCH HIGHLIGHTS BULLETIN NO. 23

FEBRUARY  
2024

Visit Our Website

<https://www.ucd.ie/socialpolicyworkjustice/research/researchnewsandevents/researchhighlightsbulletins/>



# **NEW FUNDED PROJECTS**

<https://www.ucd.ie/socialpolicyworkjustice/research/researchprojects/>

## Swedish Research Council for the Health Working Life and Welfare, Applied Welfare Strand



### UCD Principal Investigator: Dr Sarah Donnelly

**Dr Sarah Donnelly** is part of a team of researchers from Linköping University led by Associate Professor Anna Olaison, along with Associate Professor Annika Tagizadeh Larsson and Associate Professor Susanne Kelfve who have been awarded SEK 23,711 000 /€ 2,122,427 from the Swedish Research Council for the Health Working Life and Welfare, Applied Welfare Strand. The project is entitled: DEM(H)CARE – Coordinated interventions between elder care, home health care,

Coordinated interventions between elder care, home health care, and primary care to develop best practice for older persons living at home with cognitive disorder (DEM(H)CARE ).



**Research is being led by the following team from Linköping University, Sweden.**

- Assoc. Prof. Anna Olaison;
- Assoc.Prof Annika Tagizadeh Larsson;
- Assoc. Prof. Susanne Kelfve

---

and primary care to develop best practice for older persons living at home with cognitive disorder.

Sarah is one of two Senior International Advisors to the project whose role it will be to:

- participate in the planned partner workshops and provide input, and
- have an expert advisory role on key decisions throughout the programme that are related to their specific competences.

# FUNDED PROJECTS



School of  
Social Policy,  
Social Work  
and Social  
Justice



# DEEPEN

DEEPEN explores the democratic governance of capital-funded occupational pension schemes.

Funded by European Union's Horizon 2020 NORFACE research and innovation programme

## Overview

**DEEPEN** explores the democratic governance of capital-funded occupational pension schemes. We investigate how governments, regulators and labour market actors govern funded pensions and whether participants are satisfied with pension fund performance. The project focuses on six European countries: Denmark, the Netherlands, Germany, Austria, Ireland and Spain.

our work packages investigate the following research questions:

- How does national policy define participant influence on funded pension provision?
- How do stakeholders use pension fund governance to influence investment policy?
- How have capital-funded pension schemes performed in terms of pension outcomes across European welfare states?
- To what extent are individual attitudes on pension investment aligned with these inputs and outputs?

The project combines statistical analysis of quantitative data with comparative case studies based on interviews and document analysis to answer these research questions.

## Project Team

The project team consists of:



- **Professor Karen Anderson** (Project Leader)

### Principal Investigators



- Natascha van der Zwan, Leiden University;



- Juan Fernandez, University Carlos III of Madrid;



- Tobias Wiß, Johannes Kepler University Linz

### Postdoctoral Researchers



- Hayley James, University College Dublin



- Philipp Golka, Leiden University

### PhD Candidates



- Sara Gonzales, Universidad Carlos III de Madrid



- Thomas Mayer, Johannes Kepler University Lin

# DEEPEN

DEEPEN explores the democratic governance of capital-funded occupational pension schemes.

Funded by European Union's Horizon 2020 NORFACE research and innovation programme

## Overview

**DEEPEN** explores the democratic governance of capital-funded occupational pension schemes. We investigate how governments, regulators and labour market actors govern funded pensions and whether participants are satisfied with pension fund performance. The project focuses on six European countries: Denmark, the Netherlands, Germany, Austria, Ireland and Spain.

our work packages investigate the following research questions:

- How does national policy define participant influence on funded pension provision?
- How do stakeholders use pension fund governance to influence investment policy?
- How have capital-funded pension schemes performed in terms of pension outcomes across European welfare states?
- To what extent are individual attitudes on pension investment aligned with these inputs and outputs?

The project combines statistical analysis of quantitative data with comparative case studies based on interviews and document analysis to answer these research questions.

## Most Recent Publication

**Juan J. Fernández, Tobias Wiß & Karen M. Anderson** (2023) Issue salience and feedback effects: the case of pension reforms, *Journal of European Public Policy*, DOI: 10.1080/13501763.2023.2263051

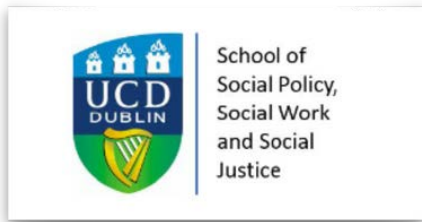
### ABSTRACT

What is the relationship between social policy reforms and issue salience in public opinion? Extensive research analyses policy feedbacks on policy preferences and the influence of policy preferences on policy change. Scant research, however, considers the link between reforms and issue salience – i.e., the perception of importance citizens attach to a topic. We address this gap in the literature through the comparative study of the salience of the 'pension issue'. Drawing on a novel dataset covering 2010–2020 and 28 European countries, we argue that the passage of pension reforms shapes pension salience. Multilevel fixed effects models indicate that pension reforms that include either contracting or expansionary provisions are positively related to pension salience. In contrast, expansionary and contracting reforms, by themselves, are not robustly associated with pension salience.

### KEYWORDS

Europe, feedback effects, issue salience, pension reforms

# NEW APPOINTMENTS





# EU–Council of Europe (CoE) project: ‘Support the implementation of the Barnahus project in Ireland’

## DESCRIPTION

**Dr Joe Mooney has recently been appointed to the Council of Europe's panel of experts related to their Joint EU DG Reform – CoE Project “Support the implementation of the Barnahus project in Ireland”. Dr Mooney will join a panel of experts supporting the roll out of the Barnahus model in Ireland. Barnahus is an interdisciplinary response to the issue of child sexual abuse.”**

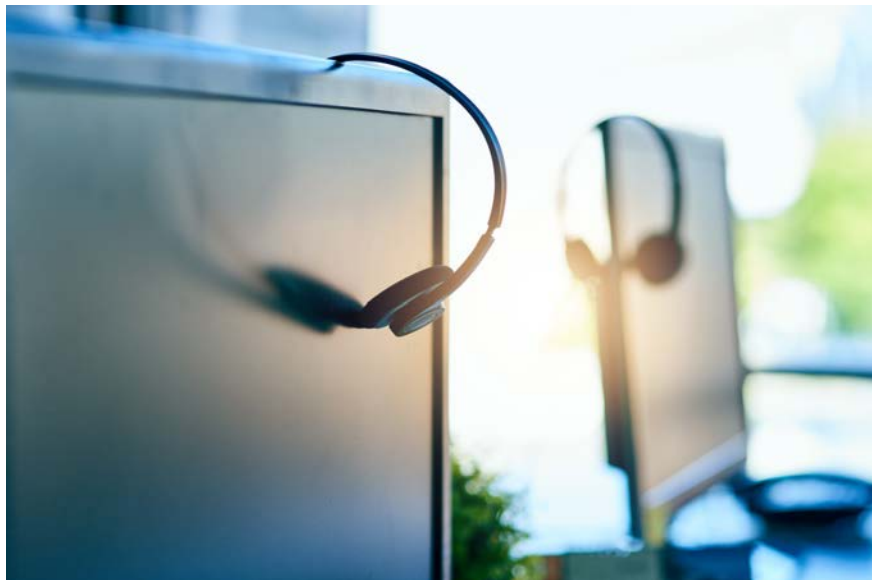
**For more information email: [Joseph.Mooney1@ucd.ie](mailto:Joseph.Mooney1@ucd.ie)**





School of  
Social Policy,  
Social Work  
and Social  
Justice

# SCHOOL CENTRES: RESEARCH NEWS



# UCD Centre for Japanese Studies (JaSt)



## Hiroshima Seminar & Poster Exhibition

JaSt held an evening seminar 'Is Hiroshima still radioactive?' in the Museum of Literature Ireland (MoLI) on the 20th of February and launched a two-week long poster exhibition on the theme of 'nuclear bombs and their aftermath in Hiroshima' in the Student Centre on the Belfield Campus. These events are hosted by the UCD Centre for Japanese Studies (JaSt), and partly supported by Hiroshima City University and the Hiroshima Peace Culture Foundation. The highly engaging seminar brought in approx. 50 attendees.



The poster exhibition on the Belfield campus was launched on the same day (Special thanks to the UCD Student Services Team, particularly Rob).



(Left to Right: Mr Yusuke Akishima & Prof. Robert Jacobs, Hiroshima City University (HCU), and **Assoc. Prof. Kodate**)

After the seminar, the guests from Hiroshima and key organising members were invited by the Japanese Ambassador to his residence.



(Left to Right: Mr Akishima (HCU), Dr Declan Downey, UCD History/JaSt, Prof. Robert Jacobs (HCU), H.E. Mr Norio Maruyama (Japanese Ambassador to Ireland), Prof. Emma Sokell, Head of School, UCD Physics/Deputy Director, JaSt, Assoc. Prof. Kodate, UCD SPWJ/Director, JaSt, Mr Hugo O'Donnell, Chairperson, Experience Japan/JaSt/UCD Global Engagement)

On the 22nd of February, Mr Takehiro Kagawa (Chairperson of the Hiroshima Peace Culture Foundation and Secretary General of Mayors for Peace Secretary, and former Japanese Ambassador to Egypt) also visited UCD, separately from the earlier delegation. He met and conversed with UCD students from various Societies including Law, Politics & International Relations and History and others.



UCD students with Mr Takehiro Kagawa, Hiroshima Peace Culture Foundation / Mayors for Peace Secretary (in the middle).



(Left to Right: Mr Shintaro Takeuchi, Mayors for Peace Secretariat, Hiroshima, Adjunct Prof. John Neary, School of Social Policy, Social Work and Social Justice (SPWJ)/JaSt, Prof. Emma Sokell, School of Physics/JaSt, Mr Takehiro Kagawa, Chairperson of the Hiroshima Peace Culture Foundation, Dr Declan Downey, School of History/JaSt, Assoc. Prof. Nao Kodate, SPWJ/JaSt)



# Hokkaido University (HU) President Prof. Houkin's delegation visit and the signing of (renewed) MoU between HU and UCD



(Left to Right: VP for Global Engagement, UCD, Prof. Dolores O'Riordan, UCD President Prof. Orla Feely, HU President Prof. Kiyohiro Houkin, HU Advisor to the President, Prof. Kazunori Iwabuchi)

Since the early 2000s, Hokkaido University and UCD have had a string of strong research collaborations. Professor Emeritus William (Billy) Hall (the UCD Centre for Research in Infectious Diseases) has been instrumental in establishing this collaboration. Alongside Prof. Emeritus Gerry O'Sullivan in the School of Physics, Prof. Hall is one of the pioneers in not only establishing but also nourishing the links with Japanese universities.

Founded as the Sapporo Agricultural College in 1876, HU is one of Japan's seven former 'Imperial Universities' (Tokyo, Kyoto, Tohoku, Osaka, Nagoya, Kyushu and Hokkaido). Hokkaido structures education and research around the following four themes: "Frontier Spirit," "Global Perspectives," "All-round Education" and "Practical Learning." The University has two campuses – one in Sapporo and another in Hakodate.

The UCD-Hokkaido relationship has developed over several years through persistent academic- and researcher-led partnerships. In 2014, this relationship was formalised through the signing of the Inter-Academic Exchange agreement – a high-level MoU which stated each institution's intentions to formalise relationships through detailed MoAs. Assoc. Prof. Kodate has been a senior researcher at Hokkaido University's Public Policy Research Centre since 2013.

The partnership receives support through the UCD Centre for Japanese Studies, while multiple units across UCD and Hokkaido have established research and academic collaborations. Notable collaborations exist between the Hokkaido Research Centre for Zoonosis Control (currently the International Institute for Zoonosis Control) and UCD Centre for Experimental Pathogen Host Research (CEPHR). This relationship focuses on Zoonosis Control, with Professor Stephen Gordon having been awarded funding to further joint research.

Most recently, an Erasmus+ ICM agreement has been signed (for the second time) between UCD and HU to facilitate staff, researcher and PhD-level mobility in the areas of Infectious Diseases and Social Policy.

Furthermore, our New College Principal, Prof. Niamh Moore-Cherry (CoSSL) met with President Houkin and spoke about her research project, Mapping Green Dublin.



(Left to Right: Ms Eri Hata, Prof. Niamh Moore-Cherry, College Principal, Social Sciences and Law, UCD, President Prof. Dr Kiyohiro Houkin, Prof. Kazunori Iwabuchi).



(Left to Right: Ms Taena Uemura, HU Research Administrator (International), Dr Kodate, Ms Shauna Hughes, Director, Global Relations, Partnerships and Mobility, UCD, Prof. Steve Gordon (UCD Veterinary Science/JaSt), VP for Global Engagement, UCD, Prof. Dolores O'Riordan, UCD President Prof. Orla Feely, HU President Prof. Kiyohiro Houkin, Prof. Kazunori Iwabuchi, HU Agricultural Science/Advisor to the President, Ms Eri Hata, Director, International Affairs, HU, Prof. Yasuhiko Suzuki, International Institute for Zoonosis Control, HU, Prof. Billy Hall, UCD).



## Schools Photographic Competition



Manga by Hayman

# 9th Hokkaido Youth Photo Festival Exchange Project [Now including Ireland]

## Secondary School Competition

Theme:

### The Charm of Your Region

- International cultural exchange through photography
- Teams of three / One team per school / Winners represent Ireland
- Winner invited to a language, cultural and photography festival in Japan
- A Teacher accompanies the winning team to the one week festival
- Open to students in 3rd, 4th or 5th year
- Hokkaido Youth Photo Festival Exchange runs from 19th to 24th August

More information  
[www.ucd.ie/UCD\\_Japan/PhotoCompetition](http://www.ucd.ie/UCD_Japan/PhotoCompetition)



Photo Competition



#ThinkLanguages



# Secondary School Photo Competition - Winners Represent Ireland in Japan this August

JaSt is delighted to announce the 9th International High School Students' Photo Festival Exchange (HIGASHIKAWA Youth Festival).

Background: JaSt, through links with various bodies in Japan, has been working with Higashikawa and the Hokkaido International High School Students' Photo Festival Exchange to include Ireland. It is great that Ireland will join high school teams from 22 countries this year at the event. [<https://higashikawa-youth-fest.jp/>]

To select the Irish representatives [team of three students + teacher from one secondary school], we will be running a competition to choose the winner. Please see the information attached for more details. The winning team will have their return flights to and from Hokkaido, plus accommodation at the festival, covered.

<https://higashikawa-youth-fest.jp/common/pdf/guidelines-irl.pdf>

# Japan Society for the Promotion of Science (JSPS) London visit

On 27 February, Professor Naoto Kobayashi (Director, JSPS London / Professor Emeritus, Waseda University), together with his Deputy, Dr Myoken and Ms Takahashi, came to UCD to give an information session about partnership opportunities & research funding. They also visited Trinity College Dublin and the Science Foundation Ireland to discuss possible future collaborations after the establishment of Taighde Éireann- Research Ireland.

Science • Technology • Society

Presentation followed by Q&A

## Research opportunities in Japan

Professor Kobayashi will be joined by Dr Yumiko Myoken, Deputy Director, JSPS London to discuss partnership opportunities and funding sources for collaborative projects

科学・技術・社会

UCD Centre for Japanese Studies

UCD DUBLIN

Professor Emma Sokell  
Head of UCD School of Physics & former JSPS Scholar / Deputy Director, UCD Centre for Japanese Studies

Professor Naoto Kobayashi  
Director, Japan Society for the Promotion of Science [JSPS] London

JSPS London

Tuesday 27 February, 2024

1:00 pm

H2.22 Science Hub, O'Brien Centre

[www.ucd.ie/japan/](http://www.ucd.ie/japan/)

Japan Seminar Series



(Left-Right: Dr Yumiko Myoken, Deputy Director, JSPS London, Assoc. Prof. Nao Kodate, Prof. Naoto Kobayashi, Director, JSPS London, Prof. Emma Sokell, former JSPS Fellow, Ms Miki Takahashi, International Programme Associate, JSPS London).



# Japanese Ambassador's special lecture for Discovery Module "Gateways to Japan"

H.E. Mr Norio Maruyama (Ambassador of Japan to Ireland) gave a special lecture 'Global Ireland and Japan' to the students of DSCY10080 Gateways to Japan on 26 February. He highlighted the importance of learning a foreign language as a 'gateway' to its culture, society and people, even when AI and robotics can aid and enhance knowledge acquisition of other cultures and intercultural communications.



Ambassador Maruyama also spoke about career opportunities for students, and business collaborations between Japan and Ireland, as a EU member state. The Joint Statement between Japan and Ireland "Taking Forward Partnership with Shared Ambition" signed by between the then Taoiseach (Micheál Martin T.D. and Prime Minister KISHIDA Fumio in Tokyo on 20 July, 2022, as well as the Ireland House (to be opened in 2025) were mentioned.



(Mr Xiaokun Tan, 2nd year student, BA Global Studies gave a small gift to the Ambassador, representing the class of 2023/24.)

# Upcoming Seminar

Interdisciplinary Japan Studies Seminar

学際的日本研究セミナー

## Sublime Aesthetics, or the Cultural & Mythical Inversion Power of Negativity:

From Edmund Burke's Ireland to Lafcadio Hearn's Izumo in Hidden Japan

This lecture delves into Sublime Aesthetics, adapting them to Lafcadio Hearn's sensibilities, aiming for a comparative fusion of Irish and Japanese cultures through a study of pain inversion and representation impossibility. It explores philosophical connections in Izumo myths, linking to Hearn's cultural immersion in Matsue.

UCD  
Centre for  
Japanese  
Studies



UCD  
Centre for  
Asia-Pacific  
Research



Prof Hideki Kuwajima  
Professor of Aesthetics,  
Hiroshima University

小泉八雲



Wednesday 27 March, 2024

1:00 pm - 2:00 pm

D101 Newman Building, Belfield

[www.ucd.ie/japan/](http://www.ucd.ie/japan/)

Japan Seminar Series

Prof. Hideki Kuwajima (Graduate School of Humanities and Social Sciences) will return to UCD in late March. In July 2023, When College VP for Global Engagement, Social Sciences and Law, Dr Justin Jütte and Mr Richard Emery (Director, Asia Pacific UCD Global / UCD Ar Fud na Cruinne) visited Hiroshima University, President Mitsuo Ochi (Hiroshima University) expressed strong interest in developing an MOU with UCD. Prof. Kuwajima will discuss possible research collaborations in the two Colleges (Arts & Humanities / Social Sciences and Law) during his stay, and will visit the Museum of Literature Ireland and meet with its Director, Mr Simon O'Connor. His visit has been coordinated by JaSt Director, Dr Nao Kodate.

On 27 March, between 12 noon and 1pm, light lunch will be served in D101, and everyone is welcome to join us and meet with Prof. Kuwajima, if you are interested in collaborating with him or his colleagues at Hiroshima University.



School of  
Social Policy,  
Social Work  
and Social  
Justice

# PAST EVENTS

**JANUARY-FEBRUARY 2024**

**Seminars,**



# ROUNDTABLE



**FEBRUARY 13, 2024**

**UCD HUMANITIES INSTITUTE**

## **EXECUTIVE SUMMARY**

**Dr Mary McAuliffe** and Dr Fionnuala Walshe (History) hosted a roundtable on 'Irish Women and the Constitution'. The roundtable panel included contributions from:

- Dr Mary McAuliffe (UCD, chair);
- Prof. Caitriona Beaumont (London South Bank University);
- Associate Professor Jennifer Redmond (Maynooth University);
- Orla O'Connor (National Women's Council);
- Prof. Lindsey Earner Byrne (Trinity College Dublin); and
- Julie Morrissy, the Sutherland School of Law Poet in Residence,

It was recorded and can be listened to online at <https://historyhub.ie/women-and-the-irish-constitution-a-roundtable-discussion>

# Research Seminar at Ritsumeikan University's College of Policy Science

Date/Time: Thu 18 January 2024, Zoom

The open research seminar “Welfare Robots and the Future of Care” was held at the Graduate School of Policy Science, Ritsumeikan University (Osaka, Japan) on the 18th of January 2024 via Zoom.

Naonori Kodate, Associate Professor in Social Policy & Social Robotics from University College Dublin (UCD), was invited to bring a lecture. The lecture includes three parts, the introduction of Prof. Kodate’s research history and current field, UCD, and the basic information about Ireland, the characteristics of Irish social policy, and examples of welfare robots and the future of care.

(...)

In the final part, Prof. Kodate shared the cases of care robots in different countries and discussed the incoming challenges and expectation of the welfare robots in the future. The research results showed different rankings of the most influential factors in decision-making of using a care robot. In Japan, the safety of care robots is the primary factor influencing the using of the robots. However, in Ireland and Finland, the right of human social interaction under the use of care robots ranks 1st among all the factors. During the lecture, Prof. Kodate showed a 10-minute meeting recording of his three-year research project “Harmonization towards the establishment of person-centered, Robotics-aided care System” (funded by the Toyota Foundation). Besides, Prof. Kodate introduced two examples of care robots in Ireland. Mylo, a care robot designed for patients with dementia, plays a role in sending notification, monitoring heart rate, and abuse prevention. V-Air, another caring robot, solves the problem of indoor air circulation. Both robots achieve a temporary success in the plot test period.

This is an excerpt from Ritsumeikan University’s website. You can access full articles from the following links.

English version - <https://en.ritsumei.ac.jp/ps/news/article.html?id=39>

Japanese version - [https://www.ritsumei.ac.jp/gsps/news/article.html?news\\_id=72](https://www.ritsumei.ac.jp/gsps/news/article.html?news_id=72)

Special thanks to Prof. Sakanishi, Prof. Osaka and Yi-san at Ritsumeikan.



THE ANNUAL

# DOROTHY MACARDLE

HUMANITIES LECTURE

Tuesday 20th of February

2:30pm, Whitaker Theatre, DkIT



O  
R  
M

Dr **Mary McAuliffe** delivered the annual *Dorothy Macardle Humanities Lecture* at Dundalk IT. The lecture is titled, 'Writing the Women back in? Reflections on Revolutionary Women Histories and the Decade of Centenaries'.

The Annual Dorothy Macardle Humanities Lecture is a tribute to Dorothy Macardle who was born in Dundalk in 1889. Dorothy was a teacher, political activist, successful novelist, playwright, critic, historian and social campaigner for women's and children's rights, with a particular interest in refugees.

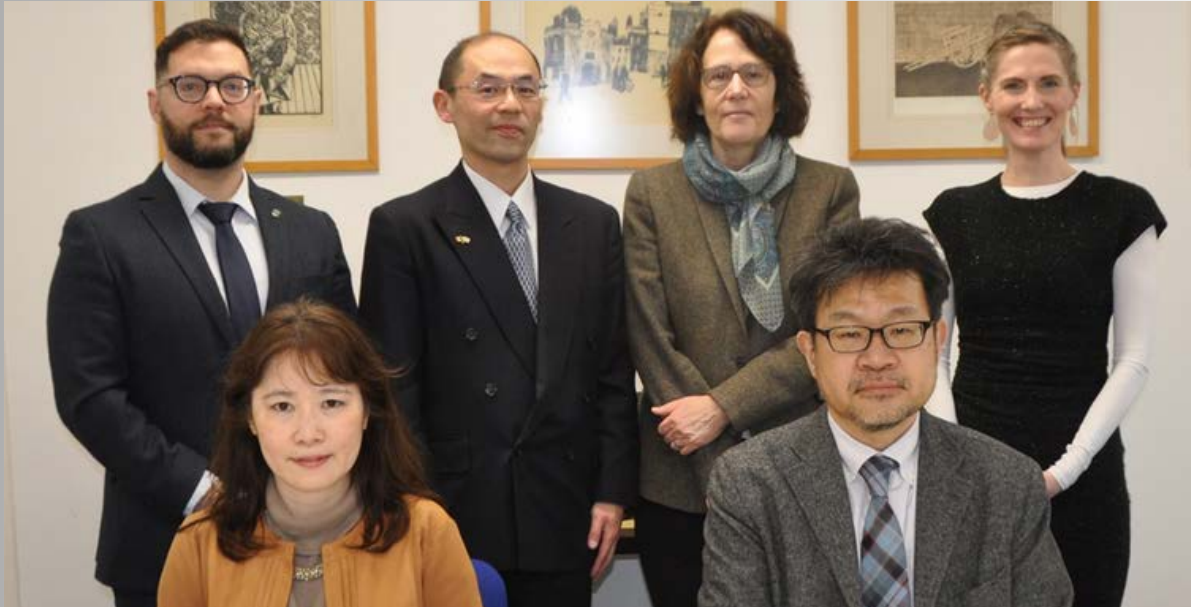
Each year DkIT bring a leading academic to present a public lecture for students and faculty based on a theme related to Macardle's many interests but in the general humanities area, with a focus on identity, place and community.

For more information please go to the following link:  
<https://www.dundalkdemocrat.ie/news/local-news/1421269/dundalk-it-to-host-free-dorothy-macardle-lecture.html>

---

## Hokkaido University Graduate School of Public Policy's visit

Date/Time: Tue 21 February 2024, 12:00-14:00



### Details

Head of School, Prof. Karen Anderson, Director of the Geary Institute for Public Policy, Prof. Michelle Norris and Assoc. Prof. Naonori Kodate welcomed Prof. Mikine Yamazaki on the 21st of February in Hanna Sheehy Skeffington Building. The UCD Centre for Japanese Studies, affiliated with the School, hosted this working lunch to discuss our recent success of getting the competitive Erasmus+ICM funding with Hokkaido University (jointly done with the UCD School of Veterinary Medicine under the theme of One Health), and future collaborations.

Prof. Mikine Yamazaki is a Professor in Public Policy at Hokkaido University. His major is territorial politics and public policy, focusing on devolution/decentralisation, and public policy of tobacco and alcohol control from a comparative perspective. His English joint papers include A Comparison of Tobacco Policy in the UK and Japan: If the Scientific Evidence is Identical. Why is there a Major Difference in Policy? (Journal of Comparative Policy Analysis: Research and Practice (2018)).

He was a visiting professor of the Division of Politics at the University of Stirling from 2015 to 2016. He and Dr Kodate have known each other for more than 20 years and initiated a short-term study programme called Shamrock Programme for the students at the Graduate School of Public Policy, Hokkaido University in 2013. 8 students came and study at UCD (and a few of them conducted a small research project based at the Geary Institute). Prof. Yamazaki and Dr Kodate successfully obtained the Erasmus+ICM in 2017 for the first time.

In the meeting, representatives from the UCD Global (Shane and Ruth) outlined the Erasmus+ICM scheme, followed by discussions regarding possible future collaborations in policy areas such as housing, gender, ageing and health.



**TRINITY**

**COLLEGE**

# Law Review & Colloquium

**Dr Mary McAuliffe** took part in a panel discussion on the proposed changes to the Constitution with Dr James Rooney (BL) from TCD Law School and Rosemarie Hayden, vice chairperson of the Irish Women Lawyers Association

**Date:**

Feb. 22, 2024

**Location:**

Trinity College Dublin

For more information email:

[Mary.Mcauliffe@ucd.ie](mailto:Mary.Mcauliffe@ucd.ie)



**UCD Geary  
Institute for  
Public Policy**



# **GIRSI MASTERCLASS**

'Court cases as data:  
qualitative social research in  
practice' by Stephan Köppe

**Location**

DAE G5

**Date/Time**

28th Feb, 12:00 – 1:30pm

SPEAKER

# DR CYNTHIA OKOPOKIRI

LECTURER IN SOCIAL  
WORK, UNI. OF EAST  
ANGLIA, UK



# BLACK PARENTING IN WESTERN CONTEXTS

Organised By:

**Assoc. Prof.. Muireann Ní  
Raghallaigh & Prof. Prospera  
Tedam**



## ABSTRACT

This interactive workshop draws on findings from qualitative research with Nigerian parents in Greater London and shows that the realities of child rearing in Black families are not sufficiently understood and/or acknowledged by largely white European public, child welfare related professionals, and policymakers. Black parents and families are shown to experience childrearing through the prism of social disrespect and denied rights, which in turn propels them towards resisting racial-assimilationist child welfare theories of knowledge. Through 25 individual interviews and two focus group discussions, parents shared their childhood experiences and their own practices of raising children in Europe, with dominant themes of dis-respect and misrecognition.

FEB 22, 2024 @ 2:00 - 4:00 pm

Carmelite Centre, 56 Aungier St., D2



Pictured (L to R) Oluromade Olusa, PhD Student, UCD SPSWSJ & Principal Social Worker, Dr. Muireann Ní Raghallaigh, Dr. Cynthia Okpokiri and Prof. Prospera Tedam.

On Thursday the 21st of February, the School of Social Policy, Social Work and Social Justice held a seminar with Dr. Cynthia Okpokiri of the University of East Anglia on 'Black Parenting in Western Contexts'. Dr. Okpokiri is a Lecturer in Social Work and has wide ranging social work research and practice expertise, particularly in relation to child safeguarding and parenting

including Black and Black African child welfare and family dynamics in Western and African contexts. The seminar drew on findings from qualitative research with Nigerian parents in Greater London which shows that the realities of child-rearing in Black families are not sufficiently understood and/or acknowledged by largely white European public, child welfare related professionals, and policymakers.

The seminar was organised by Associate Professor of Social Work Dr. Muireann Ní Raghallaigh, Professor Prospera Tedam, Professor in Social Work who have been involved in a decolonising social work group with Dr. Okpokiri since 2020, with support from our School's Research Manager, Dr. Maureen Lyons.



Pictured: Seminar speaker Dr Cynthia Okpokiri and attendees at Carmelite Centre, Aungier Street, Dublin 2

#### Seminar Attendees:

The event was attended by a diverse cohort, including students and graduates of UCD School of Social Policy, Social Work and Social Justice and of other UCD schools, by students from TUD and TCD, by academics from various institutions, by social work and family support practitioners from Tusla, the HSE, private fostering organisations and from NGOs and by policy makers from the Department of Children, Equality, Disability, Integration, and Youth.

#### Dr. Cynthia Okpokiri Biography:

- Wide-ranging social work research, scholarship, and practice experience.
- Research explores child safeguarding and parenting, including Black and Black African child welfare and family dynamics in Western and African contexts.
- Developed a distinct optimal Black parenting style termed 'requisite parenting'; this has been evaluated in a study (Okpokiri, 2024) funded by Barnardo's Children's Charity.

# POEM ABOUT RACISM

WRITTEN BY CAITRÍONA  
NICHOLLS, EQUALITY STUDIES  
GRADUATE, WHO WAS IN  
ATTENDANCE AT THE SEMINAR

Racism was built on a lie,  
That was used to justify,  
The unspeakable and the inhumane,  
That became banal and profane,  
That became so normalised,  
We were blinded to the traumatised,  
We couldn't see and we couldn't hear,  
The abuse and the fear,  
The debasement and the degradation,  
Caused by slavery and segregation,  
How does one develop immunity?  
To the suffering of humanity,  
This question is not retrospective,  
Because we are still infected,  
Racist ideology with a different slant,  
It's the same old tropes they chant,  
Racism under a different guise,  
Same old story, different lies,  
Racist governments are opaque,  
It's just hidden in the policies that they make,  
They misunderstand that to have equality,  
You must have first equity,  
And the dominant group don't get to narrate,  
And frame the terms of the oppressed fate,  
You can't be the cause of an affliction,  
Then the cure and write the prescription,  
How can we be in such denial?  
It's like a criminal presiding over his own trial,  
It's slavery in just another form,  
And black people have to weather the storm,  
Words have been weaponised,  
To keep them marginalised,  
But the voice of justice won't be silenced,  
Until we dismantle hate and violence,  
Until all of humanity,  
Recognises this disparity,  
Until Racist ideology,  
Is consigned to history,  
And no little black girl or boy,  
Has to be aware of the Racist lie,  
Until truth becomes the dominant force,  
We all must stay the course,



# Responding to Domestic Violence & Abuse in Ireland, North & South

**Thursday 29 February 2024**

Fairways Hotel, Dundalk

**BASW**  
Northern Ireland  
The professional association for social work and social workers

**IASW**  
Irish Association of Social Workers

*Generously sponsored by the Department of Justice (Ireland) & the Department of Health & Department of Justice (Northern Ireland)*

## CONFERENCE PROGRAMME

8.45am – 9.30am	Registration tea & coffee
9.30am – 9.45am	Welcome & introductions—Vivian Geiran, Chair, IASW
9.45am – 10.05am	Opening Remarks—Helen McEntee TD, Minister for Justice, & Naomi Long MLA, Minister of Justice
10.05am – 10.35am	<i>Challenging the professional with the personal</i> —Marcella Leonard MBE, Independent Social Worker
10.35am – 11.05am	<i>Responding to Domestic Violence and Abuse: Contexts, Complexities &amp; [Re] Emerging Debates</i> —Professor Stephanie Holt, Head of School of Social Work & Social Policy Trinity College Dublin
11.05am – 11.15am	Reflections on the morning—Aine Morrison, Chief Social Worker NI
11.15am – 11.40am	Coffee break
11.45am – 12.45pm	Parallel session one
12.45pm – 1.55pm	Lunch
1.55pm – 2.30pm	<i>Illuminate the past to make the future safer</i> —Frank Mullane MBE, CEO, Advocacy After Fatal Domestic Abuse
2.30pm – 3.30pm	Parallel session two
3.30pm – 4.00pm	Q&A with the keynote speakers
4.00pm – 4.15pm	Reflections & issues for action—Orlaith McGibbon, Chair, BASW NI
4.15pm	Close

WiFi password:  
**fairways2021**

**#respondingtoDVA**

 @BASW\_NI  
@IASW\_IRL



# UCD STAFF AND STUDENTS PARTICIPATE IN NATIONAL DOMESTIC VIOLENCE CONFERENCE

On Thursday 29th February, UCD staff and PhD students participated in the inaugural BASW NI/IASW 'Responding to Domestic Violence and Abuse in Ireland, North and South' in the Fairways Hotel, Dundalk.

## Understanding Carer Harm: Exploring Domestic Abuse in Family Caregiving Relationships

Dr Sarah Donnelly and Dr Marita O'Brien School of Social Policy, Social Work and Social Justice, UCD and Dr Nikki Dunne, Family Carers Ireland

### Introduction

'Carer harm' is when carers experience violence or become subject to violence or coercive behaviour, either incidental or systematic, resulting in physical, emotional and/or sexual harm (Donnelly, 2020, p.2). This type of abuse does not 'fit' the traditional patterns of relationships and little is known about this topic.

### Aims and Objectives

To date the issue of harm to carers by their relatives has been largely hidden and not recognised. The study set out to explore the concept of carer harm from the perspective of family carers of autistic children/adults and PLWD, FCI support workers and other relevant professionals including social workers, nurses, educators, service providers and advocacy organisations in order to better understand, prevent and respond to family carers experiencing harm.

### Results

Family carers reported 'falling through the cracks' of support services and feeling abandoned by professionals. Key themes included fear, shame, stigma and the impact of expectations, responses and systems that harm. Conflicts existed for many professionals in relation to balancing the needs, safety, and protection of all family members.

### Conclusions

Continuing shame and fear blamed mean that family carers do not come forward for help until it is at a crisis point, and individuals do not identify the problem as abusive themselves until then. Failure in many instances to acknowledge and address the needs of carers, siblings, or other family members right to live in a safe environment.

### Research Design: Understanding Carer Harm

Research questions: What are the perceptions and experiences of family carers of carer harm and how can they be better supported by professionals?

```

graph LR
    subgraph Package1 [Package 1: Secondary Analysis (SDA)]
        P1[Secondary data set from 'Playing a Hidden Impacts of Caring' (FCI, 2019)]
    end
    subgraph Package2 [Package 2]
        P2[Views of PLWD who have experienced carer harm]
        P3[Views of PLWD who have been carers]
        P4[Views of Autism Education providers]
        P5[Views of Support Managers/Professionals]
    end
    P1 --> Evidence
    P2 --> Evidence
    P3 --> Evidence
    P4 --> Evidence
    P5 --> Evidence
    Evidence --> Workshops[Work package 3 World Café Co-Design workshops]
    Workshops --> Out1[Output 1 Information and Support Resources for Family Carers]
    Workshops --> Out2[Output 2 Best Practice Considerations for Professionals]
  
```

When D was about nine years of age he had a tremendous meltdown and he pulled my hair even though he doesn't usually do that, but that day he did. He pulled me with such force that I hit my head on the ground and I was there for a few seconds. And then my eldest child came from school, so imagine D was nine so my eldest was eleven, can you imagine what it's like for an eleven year old child to restrain his brother on the sofa to give me the chance to get up. I remember this day to the day I sit. Like my eldest was crying, he was saying "Mummy I don't know for how long more I can restrain him". (Lina, Autism Family Carer)

**Dr Sarah Donnelly** and Freda Quinlan, PhD student participated with poster presentations. Sarah's poster presentation was entitled 'Understanding Carer Harm: Exploring Domestic Abuse in Family Caregiving Relationships.'



# Combining scoping review and concept analysis methodologies to clarify the meaning of adult-child to older-parent coercive control

Freda Quinlan, HSE Social Work Team Leader & PhD candidate, UCD (freda.quinlan@ucdconnect.ie)  
Dr Sarah Donnelly, UCD (sarah.donnelly@ucd.ie) & Dr Deirdre O'Donnell, UCD (deirdre.odonnell@ucd.ie)



## Background

While common understanding of the concept of coercive control relates to intimate relationships, increasingly the term has been adopted by policymakers and practitioners from other disciplines to describe any number of controlling behaviours observed to exist in a variety of other familial and social contexts. This form of abuse occurs relationships where there is an expectation of trust and shares many attributes with psychological elder abuse. Extensive research studies have examined how coercive control is enacted within intimate relationships. However, our understanding of how adult children employ strategies of coercive control in their relationships with their older parents is limited.

## Prisma Flow chart



Following scoping review methodology, we performed a systematic search in six databases (see prisma-scr chart). Using the PCC (population, context, concept) method we identified keywords such as "older parent" etc. these keywords along with others identifying the concept "power and control", along with the context eg. "family relationships" served to target studies which had used these keywords in their research studies.



## Methods

Scoping review and concept analysis methodologies were combined in a hybrid model to clarify and analyse the concept of non-intimate coercive control. The framework proposed by the Joanna Briggs Institute (JBI) and the Preferred Reporting Items for systematic reviews (PRISMA-ScR) guided the systematic literature review. Adopting Rodgers evolutionary approach to concept analysis allows for the concept of non-intimate coercive control to be examined as a dynamic and ever-changing phenomena that is context specific. The antecedents, attributes and consequences of adult-child to older-parent coercive control were described in detail.

## Rodgers (1989) Evolutionary Concept Analysis

Date of Search: 20 <sup>th</sup> April 2023		Database: ASSA	
POPULATION	CONCEPT	CONTEXT	
MS Elderly fathers	MS Coercion	MS Family relationships	
MS Elderly men	MS Elder Abuse	MS Family responsibility	
MS Elderly women	MS Emotional abuse	MS Family conflict	
MS Elderly married partners	MS Bullying	MS Parent-adult child	
MS Elderly mothers	MS Verbal aggression	MS Home environment	
MS Elderly husbands	MS Aggression	MS Intergenerational	
		MS Parenting	
MS Elderly people	MS Chronic victimisation	MS Relationship	
MS Older people	MS Victimization	MS Family relationship	
MS Elderly parents	MS Intimidation	MS Parent-adult child	
		MS Relationships	

## Antecedents

- Ageist norms
- Dependence/ reliance
- Parental –adult child relationship
- Perpetrator characteristics

## Attributes

- Fear and intimidation
- Domination- power and control
- Intrusion and entrapment
- Omnipresence
- Manipulation of systems

## Consequences

- Isolation
- Decline in mental/physical health
- Shame/ stigma
- Fearfulness
- Degradation/ humiliation

## Results

Searches of the literature revealed that the concept of non-intimate coercive control is rarely addressed because of this the broader concept of psychological elder abuse was examined and then placed within the context of adult-child to older-parent relationships. This study has extended the theoretical framework of elder abuse by incorporating adult-child to older-parent coercive control as a subtype of abuse experienced by older adults. The subject area is complex and heterogenous, encompassing literature generated in the disciplines of law, social science, psychology and criminology among others. This research has enabled the construction of a theoretical conceptual boundary around the subject by identifying key concepts, theories, surrogate terms and sources of evidence of adult-child to older-parent coercive control.

## Conclusion

This study found that as an emergent topic area, the phenomena of non-intimate coercive control has been subject to inconsistent terminology with legal statute progressing in advance of scholarly research. Using review and concept analysis methodologies, it was possible to gain a better understanding about the evolution of the concept of adult-child to older-parent coercive control enabling us to

Freda's poster presentation was entitled 'Combining scoping review and concept analysis methodologies to clarify the meaning of adult-child to older parent coercive control'.



# IGEES Strategic Policy Discussion

‘Self-employment & In-Work Benefit Dynamics’

**Title: Non-Take-up of In-work Benefits: Benefit Erosion, Indexing and Auto-Enrolment**


**Author: Dr Stephan Köppe, UCD School of Social Policy, Social Work and Social Justice**

Date: 29th of February, 2024

Time: 11:15am - 12.50pm

Location: TK Whitaker Room

Department of Public Expenditure,  
NDP Delivery & Reform,  
Government Buildings, Upper  
Merrion Street, Dublin 2, D02 R583.



An Roinn Caiteachais Phoiblí  
Sheachadadh PFN agus Athchóirithe  
Department of Public Expenditure  
NDP Delivery and Reform

# ABSTRACT

Workfare schemes were introduced to promote work as the main path out of poverty, but with the result that in-work poverty emerged as a new risk. Ireland's Working Family Payment aims to mitigate in-work poverty of families.

Based on EU-SILC (2014-2019) we estimate a non-take-up rate between 63-76%, which poses a major obstacle for effective poverty prevention. Moreover, we stress that non-take-up of in-work benefits differs to minimum income schemes. We provide new evidence on how labour market characteristics play an important role in explaining non-take-up, especially self-employment and the interaction with unemployment benefits.

Benefit erosion is a key factor in declining eligibility, which should be addressed by indexing. Furthermore, we propose policy reforms around automatic enrolment or tax credits to mitigate non-take-up and alleviate in-work poverty.



Keywords: non-take-up, administrative design, in-work benefits, in-work poverty, labour market characteristics, Working Family Payment

To contact dr stephan Köppe: email [Stephan.Koeppe@ucd.ie](mailto:Stephan.Koeppe@ucd.ie)



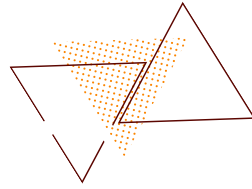
School of  
Social Policy,  
Social Work  
and Social  
Justice

# UPCOMING SCHOOL EVENTS

**MARCH 2024**

**Seminars,  
Roundtables,  
Workshops**

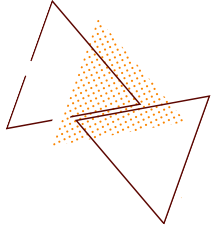
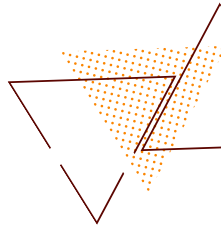




**MARCH 6, 2024**

# **SUSTAINABILITY SOCIETY**

**Dr Mary McAuliffe** has been invited to participate in **Gender Equity Discussion Panel** by the UCD Sustainability Society, along with **Dr Orla Kelly** (Social Policy) and Dr. Maebh Harding from the UCD School of Law





School of  
Social Policy,  
Social Work  
and Social  
Justice

# UPCOMING CONFERENCE PRESENTATIONS

**MARCH 2024**





 Tampere University

# 2024

## **HEX CONFERENCE, TAMPERE UNIVERSITY, FINLAND**

HEX (Research Council of Finland's Centre of Excellence in the History of Experiences) Conference 2024 – Memory, Temporality and Experience  
Dr Mary McAuliffe will take part in a panel with Professor Caitriona Beaumont, Dr Fionnuala Walsh and Dr Tiina Lintunen.

*Recovered Experiences and Contested Memories: Afterlives of activist Irish and Finnish women in the wake of revolution and civil war*

This as part of the Afterlives Project which I have been working on with our Gender Studies Visiting Fellow, Professor Caitriona Beaumont  
<https://events.tuni.fi/historyofexperience/programme/>

A stack of books is shown from a side-on perspective, with the pages of the top book fanned out. A semi-transparent grey rectangular box is overlaid on the upper right portion of the image, containing the text 'New Publications' in a white, sans-serif font. The background is a dark, textured surface.

# New Publications

# 'Interdisciplinary team members' experiences of family meetings in an Irish rehabilitation hospital: a social work action-research project

**Donnelly, S.,** Butler, P., O'Loughlin, A., Russell, E., & Carroll, P. (2024). Interdisciplinary team members' experiences of family meetings in an Irish rehabilitation hospital: a social work action-research project. *European Social Work Research* (published online ahead of print 2024). <https://doi.org/10.1332/27551768Y2024D000000005>



### Abstract

This study set out to gain a better understanding of how family meetings are facilitated and experienced in an Irish rehabilitation hospital setting from the perspectives of interdisciplinary team (IDT) members, patients and their family members. This article reports the findings from IDT members' perspectives. A critical-realist action-research approach was utilised that involved medical social workers (N = 15) and a social work academic. A quantitative, descriptive study design was adopted, which utilised a cross-sectional survey of IDT members. A total of 85 clinical staff responded to the questionnaire, of which 69 were fully completed. Four key themes emerged: pre-meeting engagement and preparation – a critical step; the impact of organisational structures; supporting participation; and mechanisms for effective family meetings. Findings indicate the importance of pre-meeting preparation, the mutuality of the relationships between participants, a standardised approach and the use of patient-centred and inclusive practices to achieve truly participatory family meetings.

Family meetings involve complex processes in which mutual influence, context, preferences, values, information shared, the nature of the relationships involved and the communicative style of participants all play significant roles in both the process and decision-making outcomes. This study concluded that social workers are perhaps in a unique position to work with IDTs in clarifying the reality of the limits of choice and the involvement of the patient and family in rehabilitation hospital settings. In preparation for the role of family-meeting facilitation, the implementation of education and training programmes for IDT members is strongly recommended.



## 'Admission of an older person into a care home in Europe: exploring the dimensions of a 'Healthy Transition' and the potential role of social work

Milne, A., Ray, M., **Donnelly, S.**, Lonbay, S.P., Montgomery, I., Corradini, F., Şoitu, D., Rossi, E., Riekkinen-Tuovinen, S., Notari, G. & Carter Anand, J. (2024) Admission of an older person into a care home in Europe: exploring the dimensions of a 'Healthy Transition' and the potential role of social work, *European Journal of Social Work*,  
<https://www.tandfonline.com/doi/full/10.1080/13691457.2024.2308593>  
Open Access Publication.

### KEYWORDS

Older people, care home admission, transitions, social work

This new publication is the third co-authored output from members of the European Network for Gerontological Social Work which is comprised of over 60 social work academics and practitioners from across Europe.

### ABSTRACT

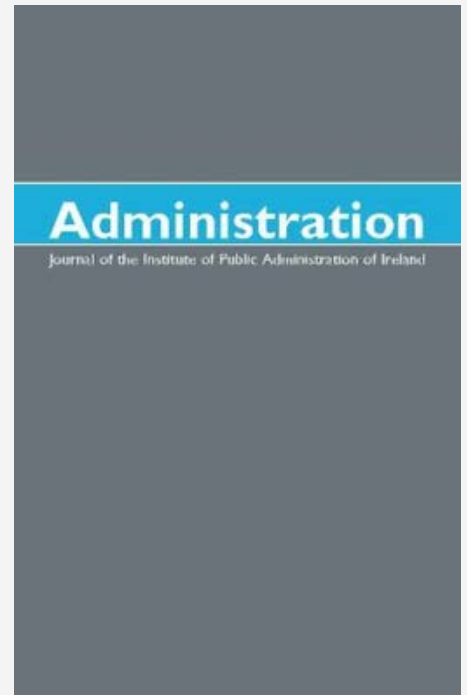
Transitions in gerontological social work are poorly theorised and underresearched. Although social workers are routinely involved in transitions of older people into care homes, they tend to be treated as a functional transition from one place to another rather than as a social, emotional and psychological process for the older person and their family. Evidence suggests that a healthy transition is more likely if the older person has exerted some influence over the 'when', 'where' and 'how' of the decision, continuity between the 'old life' and the 'new' is maintained, and their concerns are acknowledged.

Drawing on a theory of transition developed by Melies et al. (2000), this paper argues that social workers have the relational, communication and advocacy skills, as well as legal literacy and a rights-based perspective, to help to promote healthy transitions. There is considerable potential to develop, and evidence the value of, social work's contribution to this often marginalised area of practice.



## Health Services, 2023

Maria Pierce (2024) Health Services, 2023.  
Administration, vol. 72, no. 1 (2024), pp. 47–63.  
doi: 10.2478/admin-2024-0004

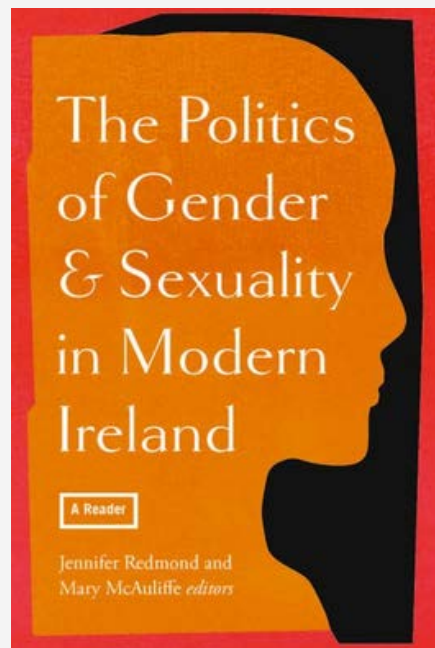


### Introduction

In 2023, the year in which the World Health Organization (WHO) declared the end of the Covid-19 pandemic, the Irish health system was grappling with increasing demand due to population growth and ageing. The cost-of-living crisis, associated with the Russian invasion of Ukraine, continued to add extra pressure to health and social care services. A range of measures were implemented as part of ongoing reforms aimed at improving access, affordability and quality of health and social care services. However, there continued to be significant barriers to accessing healthcare, exacerbated by the legacy of the Covid-19 pandemic and healthcare workforce shortages. Long waiting lists persisted. Overspending on the health budget was a feature of the Irish health system in 2023. In an effort to rein in overspending, the CEO of the Health Service Executive (HSE) ordered a series of recruitment freezes in the second half of the year. At the same time, the HSE continued to face challenges in relation to training, retention and capacity of the healthcare workforce. Within this context, this article will outline some of the key developments and challenges across Irish health services in 2023.

## EDITED BOOK

Jennifer Redmond & **Mary McAuliffe**  
(eds) (2024) *The politics of gender and sexuality in modern Ireland; A Reader.*  
Four Courts Press



### DESCRIPTION

This collection of focused, cohesive and persuasive essays is based on the newest research on gender, sexuality and sexual politics. It offers historical reflections and contemporary analyses of issues related to the contested and often hidden histories of sexual politics and gender identities in Ireland in the nineteenth and twentieth centuries. Including but going beyond the binary of male and female heterosexual experience, the book explores LGBTQI+ histories, the treatment of intersex persons, and the history of trans people and activism in Ireland. As an interdisciplinary work, this reader draws together scholars working in a range of fields on innovative, new research on this theme. The essays consider these histories as seen over two centuries and reflect on the societal shifts in modern Ireland as evidenced in two recent referenda and the responses to the scandals emerging from the state's treatment of unmarried mothers.

<https://www.fourcourtspress.ie/books/2024/the-politics-of-gender-and-sexuality-in-modern-ireland/>

### CONTENTS

Maeve O'Riordan  
Elite courtship

Mary McAuliffe  
Queer Irish female revolutionaries

Conor Reidy  
Shameful women, violent men

Leanne McCormick, Sean O'Connell and John Privilege  
Mother and baby institutions in Northern Ireland

Caitlin O'Neill and Jennifer Redmond  
'The unmarried mothers in the institution are admirably dealt with'

Jennifer Redmond  
The politics of emigrant bodies

Tanya Ní Mhuirthile  
Intersex in Ireland, a legal history

Theresa O'Keefe  
Strip searches, sexual violence and feminism during the war in Northern/Ireland

Sinead Kennedy  
Women to blame, Irish feminism's story of backlash and resistance

Antonia Hart  
Women and pawnbroking in Ireland

Deirdre Foley  
Provided the family is not neglected

Elizabeth Kiely  
Culture wars in Ireland 1996–2021: sex education debates

Mary Muldowney  
Breaking the silence II: the struggle for abortion rights in the Republic of Ireland

Orla Egan  
Lesbian activism in Cork

Sara Philips  
The emergence of the Irish Trans Archive

Maria Luddy  
Afterword

# A Feminist Vision of Care and Economic Equality

**Authors: Ursula Barry and Cora Jennings**

### Abstract

Transitions in gerontological social work are poorly theorised and underresearched. Although social workers are routinely involved in transitions of older people into care homes, they tend to be treated as a functional transition from one place to another rather than as a social, emotional and psychological process for the older person and their family.



## A FEMINIST VISION OF CARE AND ECONOMIC EQUALITY



Danielle Neilson (The Great Care Co-Op), Shelly Gaynor (Independent Living Movement of Ireland), Georgia Grogan and Sarah McEntee (Doras Bul) – 30th May 2023

Based on the research paper:  
A Feminist Vision of Care and Economic  
Equality by Ursula Barry and Cora Jennings

This paper can be found in full on the  
ActionAid Ireland website: [www.actionaid.ie](http://www.actionaid.ie)



Evidence suggests that a healthy transition is more likely if the older person has exerted some influence over the 'when', 'where' and 'how' of the decision, continuity between the 'old life' and the 'new' is maintained, and their concerns are acknowledged.

This paper can be found in full on the ActionAid Ireland website: [www.actionaid.ie](http://www.actionaid.ie)

This project received funded from the Irish Human Rights and Equality Grants Scheme as part of the Commission's statutory power to provide grants to promote human rights and equality under IHREC's Commission Act, 2014.

Editors: Action Aid Ireland and the National Women's Council of Ireland

---

For more information please Contact  
Ursula Barry, UCD Emeritus Assoc. Prof.,  
Gender Studies

Email:  
[Ursula.Barry@ucd.ie](mailto:Ursula.Barry@ucd.ie)



# MEDIA FOCUS

**FEBRUARY 2024**



---

# IRISH TIMES

---

## State must recognise and support vital role played by carers, report urges



**ActionAid Ireland and National Women's Council highlight society's reliance on care provided by women and how such carers get lower pay and pensions By Emmet Malone**

Article can be accessed at the following link:

<https://www.irishtimes.com/ireland/social-affairs/2024/02/07/state-must-recognise-and-support-vital-role-played-by-carers-report-urges/>

---

Women continue to shoulder the bulk of caring responsibilities and pay for it both in terms of reduced employment opportunities and often substantially smaller pensions, according to a report to be launched at Leinster House on Wednesday. A Feminist Vision of Care and Equality was jointly commissioned by ActionAid Ireland and National Women's Council (NWC), and highlights the scale of society's reliance on women to provide care, both paid and unpaid, as well the experience of those impacted. It is based on a series of workshops held last year and attended by women with a range of experiences of caring as well as testimonies at the Human Rights Hearing on care.

The work was supported by a grant from the Irish Human Rights and Equality Commission. Contributors spoke of "fighting a losing battle" in a situation where they found it "impossible to be financially comfortable", with one describing aspects of the current system of supports as "degrading". The report cites census and Economic and Social Research Institute data that suggests 60 per cent of unpaid carers in Ireland are women and because they are often required to take lower-paid or part-time work or exit the workforce completely, they pay for it in later life with pensions that are on average 35 per cent lower than those received by men.

The report, which is based on research by academics Ursula Barry and Ciara Jennings, finds that 80 per cent of paid, full-time care workers in Ireland are women, with the figure standing at 75 per cent globally. The work, it suggests is generally low-paid and often precarious. It calls for Government action to address the issue and provide additional supports to groups that can be marginalised and vulnerable to poverty such as one-parent families, those with disabilities and members of the Traveller community.

---

---

Among the report's recommendations are a comprehensive and publicly funded model of care which should, its authors say, be "gender responsive" and a link between the pay of full-time care workers and appropriate public service grades. It also calls for increased budgets for the provision of personal assistance to those with disabilities, substantially increased State spending on childcare services and a universal State pension. Internationally, the authors suggest, Ireland should support calls to recognise care as a human right. Speaking ahead of the launch NWC director Orla O'Connor said the report was timely given the forthcoming referendum on care. "This paper could not have come at a more opportune time. Care work is the cornerstone of our economy and wider society. This report provides a clear roadmap for how the State can properly value and invest in our care system through enhanced services and supports. It also provides a roadmap for tackling some of the most important roadblocks towards women's economic equality. It shows how the voices of women and affected groups must be at the heart of such transformational change.

"Voting 'yes' will send a strong message about the society we want to have, where everyone who provides care receives proper support and recognition. It will acknowledge that care should not only be provided by women, but should be shared equally within our homes, by the State and broader society." ActionAid chief executive Karol Balfe said the issue "is fundamentally about gender equality". "The large majority of care work that women carry out globally is not recognised as having any economic value as it remains largely hidden, invisible and unmeasured. In practical terms, this leads to economic inequality and poverty for many women, a wide gender pay gap, and an even wider gender pension gap for women in older age."

This paper can be found in full on the ActionAid Ireland website: [www.actionaid.ie](http://www.actionaid.ie)

---



# Featured Researcher

## Professor in Social Work, UCD School of Social Policy, Social Work and Social Justice

### **How did you come to select your chosen area of research?**

I often tell people that my research area chose me and not the other way around. I say this because as a Black, female of Ghanaian heritage, I spent a part of my early childhood in Canberra, Australia at a time when racism was rife. Whilst I could not name it, I most definitely experienced it. Fast forward 30 years as a practicing social worker in the UK, I recognised the overrepresentation of Black and racially minoritised individuals and families who became involved with social work and social care services. For example children in care, in school exclusions and in youth justice settings. I also recognised disparities early on in my academic career, I witnessed an overrepresentation of Black and racially minoritised students failing their social work programs, taking longer to graduate and graduating with lower degree classifications. I recognised that something was amiss. In some of my more recent research (2021/22) exploring newly graduated social workers confidence in working with Black and racially minoritised service users, we found that anti-racism was largely absent from their social work curriculums and that new graduates who took part in our study felt unconfident about how to identify and challenge racism in practice. Many graduates also said they would not recognise institutional and structural racism and therefore would be unable to challenge any processes that disadvantages Black and racially minoritised people, the consequence of which would be their continued over representation in social work services.

My research therefore has two clear aims. First is to understand the ways through which social work education contributes to the overrepresentation of Black and racially minoritised children and families involved with social services. Second, is to identify how frontline practitioners work effectively in racially and ethnically diverse communities.

### **Are there any key theories, methodologies, or paradigms that guide your research?**

My research is underpinned by critical race theory (CRT) which foregrounds race in research and discussions about Black and racially minoritised people. CRT acknowledges race as a social construct, racism is understood to be subtle, ever changing and complex. Recognition of intersecting identities and valuing the voices of Black and racially minoritised people, among others, are central to CRT.

### **Can you describe what the process of writing your most recent article/chapter was like?**

Undertaking research into Newly Qualified Social Workers (NQS) in England in 2021 with my colleague Dr Tam Cane from Sussex University was stimulating. I was based in the United Arab Emirates University at the time and so working together remotely was a steep learning curve. We held a series of round table discussions with participants on zoom and many meetings thereafter to discuss and analyse our data. We published two papers from that study and we are currently preparing a third piece.



The two papers are:

- Tadam, P., & Cane, T. (2022). "We started talking about race and racism after George Floyd": insights from research into practitioner preparedness for anti-racist social work practice in England. *Critical and Radical Social Work*, 10(2), 260–279. Retrieved Feb 27, 2024, from <https://doi.org/10.1332/204986022X16547711540394>
- Cane, T.C & Tadam, P. (2023) 'We didn't learn enough about racism and anti-racist practice': newly qualified social workers' challenge in wrestling racism, *Social Work Education*, 42:8, 1563–1585 <https://www.tandfonline.com/doi/full/10.1080/02615479.2022.2063271>

### **What are the key messages from your most recent publications?**

We need to move beyond lip service and box-ticking to genuinely commit to the process of understanding, identifying and disrupting racism in all its forms.

That there is the need for institutional and organisational support for anti-racist practice.

Social work educators should be intentional not avoidant in discussing and exploring issues of racism and anti-racism in learning spaces.

### **Overall what do you find most interesting about your area of research?**

Researching racism and anti-racism continues to be a challenge for me on a personal and professional level however I remain steadfast in my commitment to the cause through teaching, research and community service. I have seen changes for the better and excited about the potential reach my work could have in Ireland and beyond.

### **What is next for you? What projects are you working on now?**

I arrived in UCD with some projects near completion. For example the 2nd edition of my book 'Anti-Oppressive Social Work' by Sage and the 2nd edition of 'The W Word. Witchcraft Labelling and Child Safeguarding' by Critical Publishing are both due out later this year.

I am also working with colleagues Dr Muireann Ní Raghallaigh and Dr Joanne Kelleher investigating the experiences of separated children who are in state care in Ireland.

### **A word of gratitude from Prof. Prospera Tadam who joined the UCD School of Social Policy, Social Work and Social Justice in January 2024:**

I would like to thank all colleagues in the school and subject of social work who have been generous with assisting me in settling into my new work environment.

# FOCUS ON OUR POSTDOCTORAL RESEARCHERS

**Dr Ieva Zumbyte**



## **What is your current position Ieva?**

I have been a postdoctoral research fellow at the School since June, 2023. I am collaborating with Dorota Szelewa on the Horizon Europe funded TransEuroWorks project, which explores the Future of Social Protection in Europe. For more information see the project website: <https://transeuroworks.eu/>

Specifically, the UCD work package delves into the impact of EU directives on work-life balance (WLB) and equal pay/transparency on national gender equality policies. Presently, we're investigating work-life balance policy-making at the EU level and Ireland in particular.

## **What were you doing before taking up your UCD postdoctoral position?**

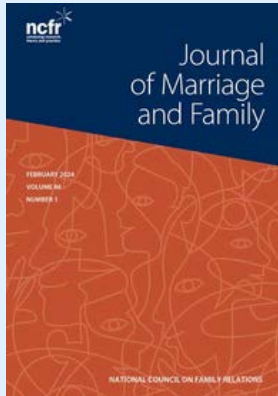
Before joining UCD, Ieva pursued her PhD in sociology at Brown University in the US. Prior to her PhD, she worked in the World Bank's Social Development Department researching policy issues related to gender, social exclusion, poverty and social impacts of policy reforms in the Global South.

## **What is the focus of your research?**

As a gender and political sociologist, my research focuses on the interplay between welfare states and gender relations. Beyond the TransEuroWorks project, I'm currently working on a book based on my dissertation titled "Adapted Delivery: How Childcare Workers and Parents Produce Care in the Neighborhoods of Chennai." Drawing from participant observations and over 200 interviews conducted in 15 neighborhoods in Chennai, India, the book illustrates how childcare quality is profoundly shaped by interactions and feedback loops between childcare workers, parents, and the social space of the neighborhood.

## **What do you enjoy most about the work you do?**

I really enjoy having to work on multiple projects and teamwork. With TransEuroWorks, Dorota and I collaborate within a consortium of nine universities, which provides an enriching experience. Regular meetings allow us to exchange insights and contribute to each other's work packages. Exploring new issues and contexts invigorates me, and comparing welfare state regimes in Ireland and other EU countries with those of countries, where I have done research in the past, like India, Vietnam and China, is particularly intriguing.



### **Tell me about your most recent publication?**

My most recent publication in the *Journal of Marriage and Family* investigates young highly educated people's employment preferences in India and the extent to which they are influenced by formal workplace policies and informal caregivers' support (To access publications go to: <https://doi.org/10.1111/jomf.12958>) . Using original survey-experimental data from a sample of 482 young, highly educated, unmarried respondents in India, the findings show that women are twice as likely to prefer full-time employment when offered informal caregivers' support compared to supportive workplace policies. Conversely, men's preferences remain unaffected by either formal or informal caregiving support. The argument is that the effectiveness of work-family policies in challenging gendered behaviors is likely to depend on the credibility of formal work and governance institutions as opposed to informal care institutions.

### **What challenges were involved in your PhD research? And how did you overcome these challenges?**

When I began my PhD, the scarcity of survey data on childcare arrangements in the Global South, particularly in India, was a source of frustration. As a result, I decided to collect my own data. Initially, I tried to use the MTurk platform, as it was gaining some traction among quantitative sociologists. But it didn't work out because it did not offer the demographic needed for the study. Then, I decided to collaborate with my contacts in India to distribute my survey among their networks of students and young professionals. This turned out to be a success yielding respondents from over 200 universities.

### **What motivates you in conducting your research?**

Two primary motivations drive my research efforts. Firstly, I strive for my research to expand knowledge and contribute to policy in under-researched areas and contexts. Second, as a sociologist I am trained to reveal how inequalities are produced and reproduced, but I am personally more inclined to research pathways that challenge inequalities and injustice." **Ieva Zumbyte**

**To contact Dr Ieva Zumbyte please email [Ieva.Zumbyte@ucd.ie](mailto:Ieva.Zumbyte@ucd.ie)**

<https://www.ucd.ie/socialpolicyworkjustice>

